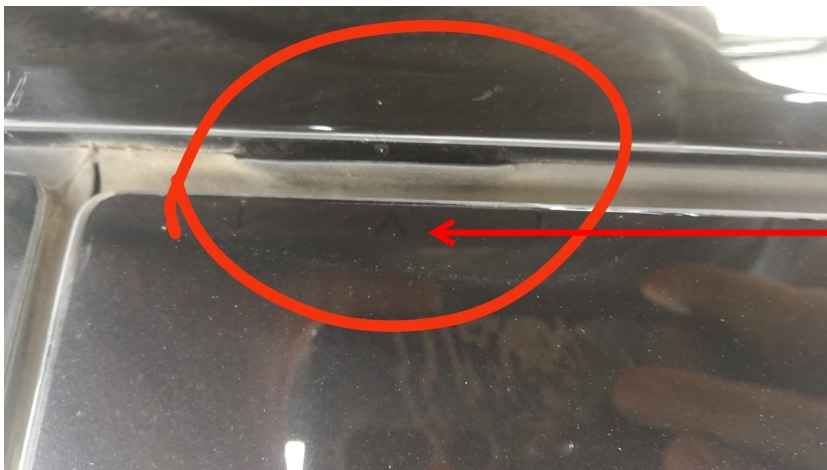


# Model-Y Roof Rack Installation (1)



Screw inserted in this position, please make sure the correct position.



The screw will will leave much longger, because the rubber pad in the wrong position. (the picture shows the wrong installation of the rubber pad)

# Model-3/Y Rubber Pad Installation (2)



Model-3 L1 (driver) L2 (passenger)  
R1 (back of driver) R2  
(back of passenger)

Model-Y L2×2 front R2×2 rear



1. The arrow mark means the car head
2. The filled cycle means the rubber pad position, R2 means for rear roof rack

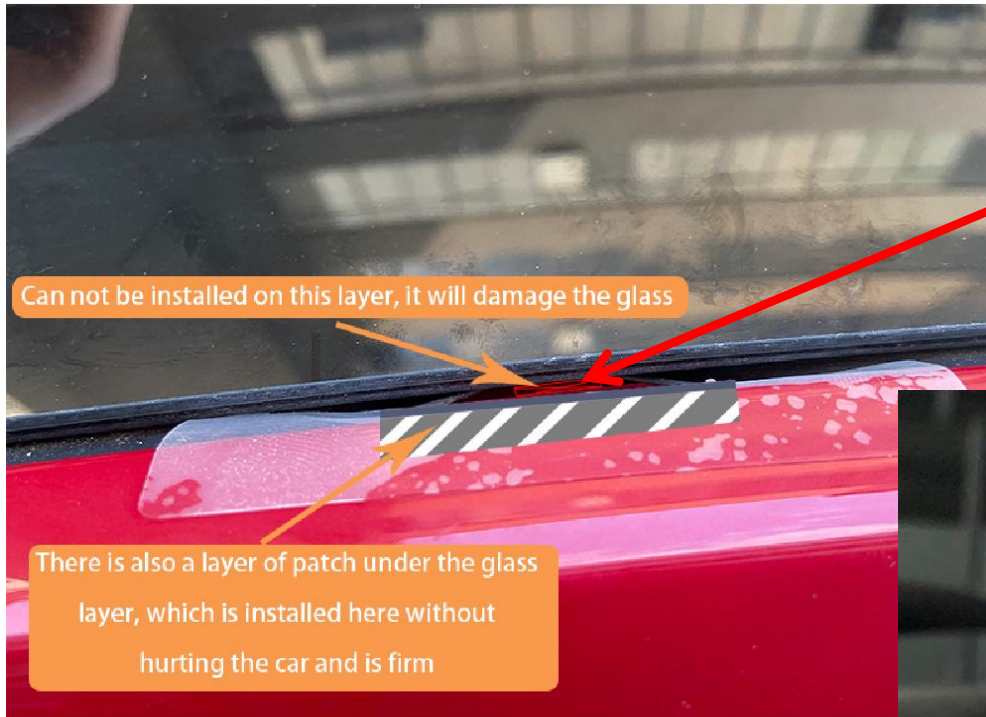
# Model-3/Y How to Fix the Screw (3)



The screws position can refer to the picture, **PLEASE DON'T MAKE IT TOO TIGHT**, or the roof glass might be broken.

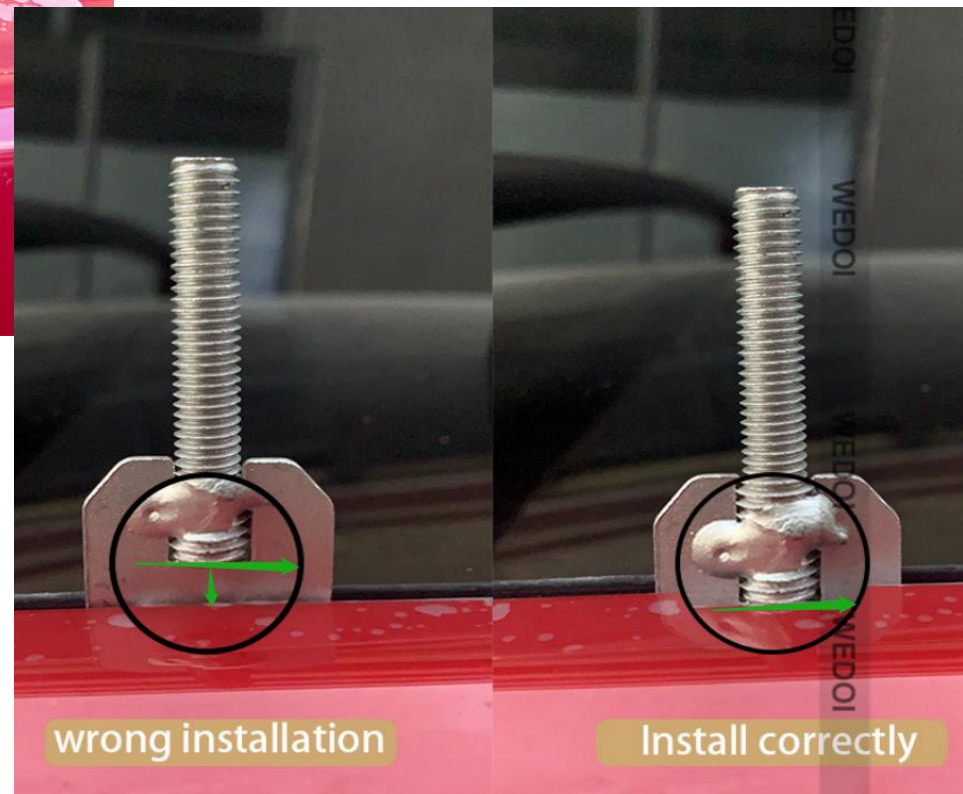
**Notes: Before you fix the screws, please must make sure the rubber pad in the correct positions. or the glass also might be broken.**

# Model-3/Y How to Put the Hook (4)



Please make sure the hook will engaged in the metal layer under the glass (the left picture, the hole is just below the glass, while there is another layer under it, and that is the correct position for the hook)

The hook position is very important, please check the right picture, **the left hook just below the glass**, after adding the nut, it will leave much press to the roof glass, so the glass might broken. **the right hook is correct.**)



# Model-3/Y Roof Rack Noise (5)



During driving the roof rack will with whistling noise, while even the original Tesla roof rack with this same problem, while please use the wide transparent tape to cover all the rubber grommet. It will helps.

